

# INSTALLATION MANUAL

### PRODUCT PARAMETER

<b>INPUT VOLTAGE</b>	100 - 277V
<b>UPLIGHT</b>	UP TO 30% UPLIGHT WITH 70% DOWNLIGHT
<b>CONTROL</b>	0-10V, DALI



### REQUIRED TOOLS (NOT INCLUDED)



DRILL  
Ø0.012"



SCREWDRIVER



SCREW  
Ø4 X H0.315"



SCREW X 4  
Ø4 X H0.24"

### SAFETY INFORMATION

**BE SURE THE POWER IS OFF! RISK OF ELECTRICAL SHOCK:** Always use the switch to power off. Do not perform any operations while this unit is powered on. The electrical system you want to connect the device to must be grounded. Read the instructions before using or powering this device. The safety instructions must remain with the unit in case of transfer. Any damage to the device linked to an inappropriate use is excluded from support by the warranty. Before connecting, make sure that the current and voltage are compatible with this device. We highly recommend that all installations are made by QUALIFIED ELECTRICIAN. We are NOT responsible by any means for the use or misuse of the following information. We are NOT responsible in whole or part for any harm or damage that may or may not be caused. We reserve the right to revise the components of any product, due to part availability or change ETL, CUL, UL standards without assuming any obligation or liability to modify any products previously manufactured and without notice. These instructions do not cover all details of variations in equipment, nor do they provide every possible contingency to be met. Turn off / unplug power when installing or service device.

### PRE - INSTALLATION

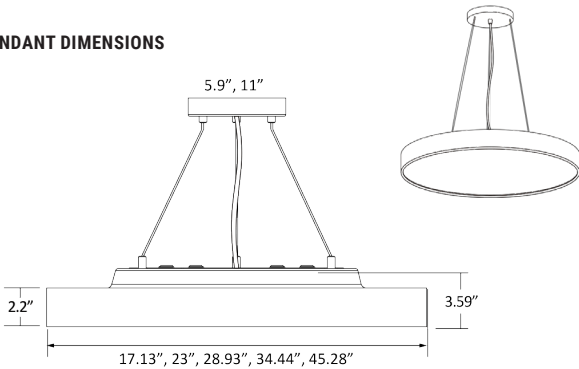
- Carefully remove the fixture from the carton.
- Before beginning assembly, installation, or operation of product, make sure all parts are present. Compare parts with package contents list and diagram on previous page. If any part is missing or damaged, do not attempt to assemble, install or operate the product. Contact customer service for replacement parts.
- Tools required for assembly (Not Included): screwdriver, phillips screwdriver, pliers, electrical tape, wire cutters, safety glasses, ladder, wire stripper.

### WARNING

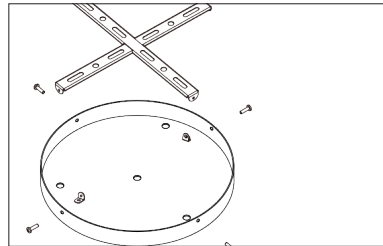
- WARNING:** Read all safety precautions and installation instructions carefully before installing or servicing this fixture. Failure to comply with these instructions could result in a potentially fatal electric shock, fire, and/or property damage.
- During the installation, make sure the power is off
  - Fixtures must be installed by a qualified electrician in accordance with the national and local electrical and construction codes and regulations.
  - Avoid looking directly into the LEDs light source to prevent dazzling
  - Electrostatic sensitive devices (ESD). Handle with necessary precautions to avoid ESD.
  - Do not use the chemicals or abrasives to clean this product. Use soft mat only. Avoid scratching the surface.

## PENDANT INSTALLATION (Caution: Before beginning installation turn off the circuit breaker and light switch)

### PENDANT DIMENSIONS

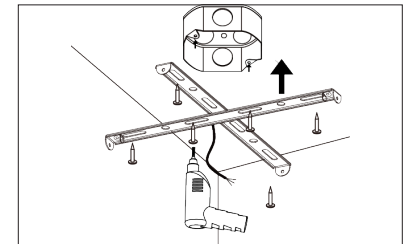


### STEP 1



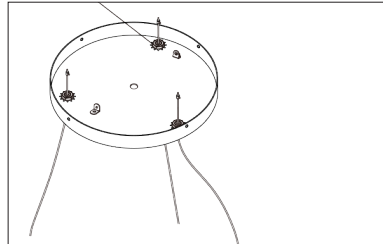
Unscrew the mounting kit

### STEP 2



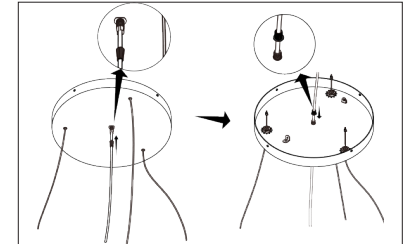
Fasten the mount kit to the J-box

### STEP 3



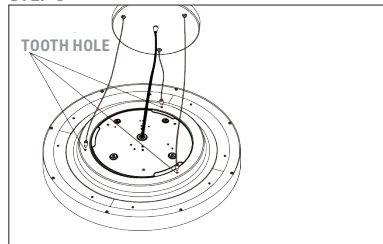
Fix ropes

### STEP 4



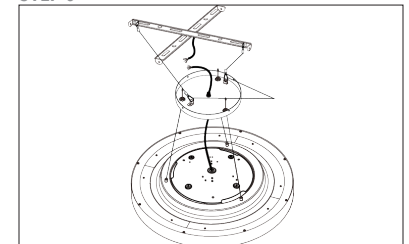
Pull the wire through and fasten the lock and buckle

### STEP 5



The sling is loaded into the tooth hole

### STEP 6

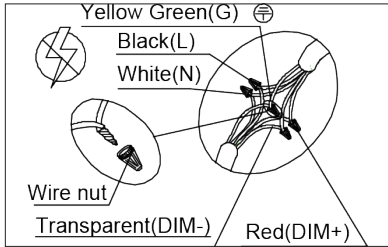


Fasten the safety rope

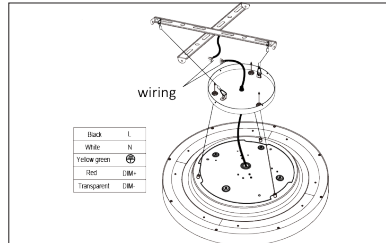
### INSTALLATION MANUAL

**PENDANT INSTALLATION CONTINUED** (Caution: Before beginning installation turn off the circuit breaker and light switch)

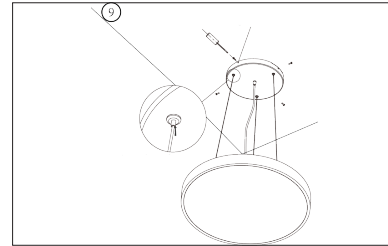
STEP 7



STEP 8

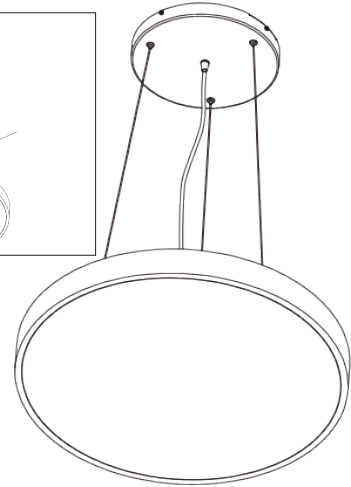


STEP 9



Press to adjust the length of sling

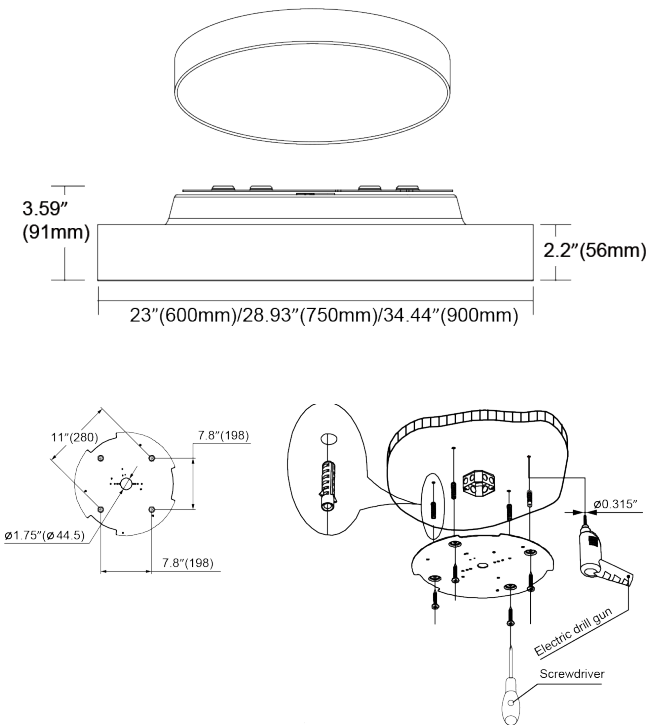
STEP 10



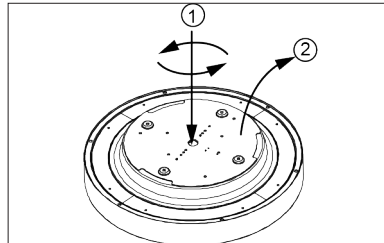
Complete

**CEILING MOUNT INSTALLATION** (Caution: Before beginning installation turn off the circuit breaker and light switch)

**CEILING MOUNT DIMENSIONS**

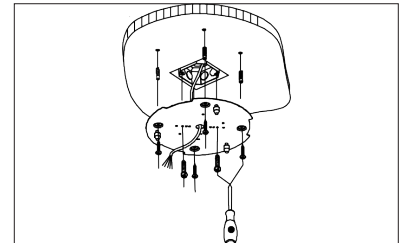


STEP 1



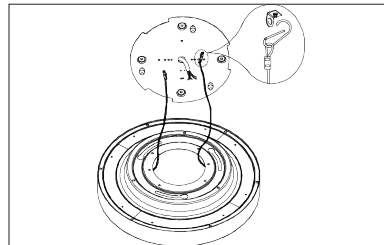
Press down then rotate counterclockwise to remove the plate

STEP 2



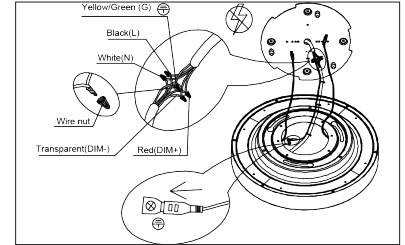
Installation sequence of securing plates

STEP 3



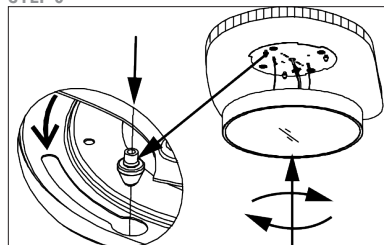
The lamp is suspended by wire clasp

STEP 4



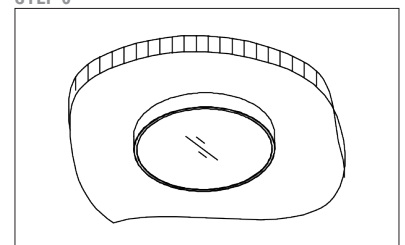
Power cable wiring (AC)

STEP 5



Spin and lock

STEP 6



Complete