

MODEL NO.	TYPE	PROJECT/DATE
-----------	------	--------------

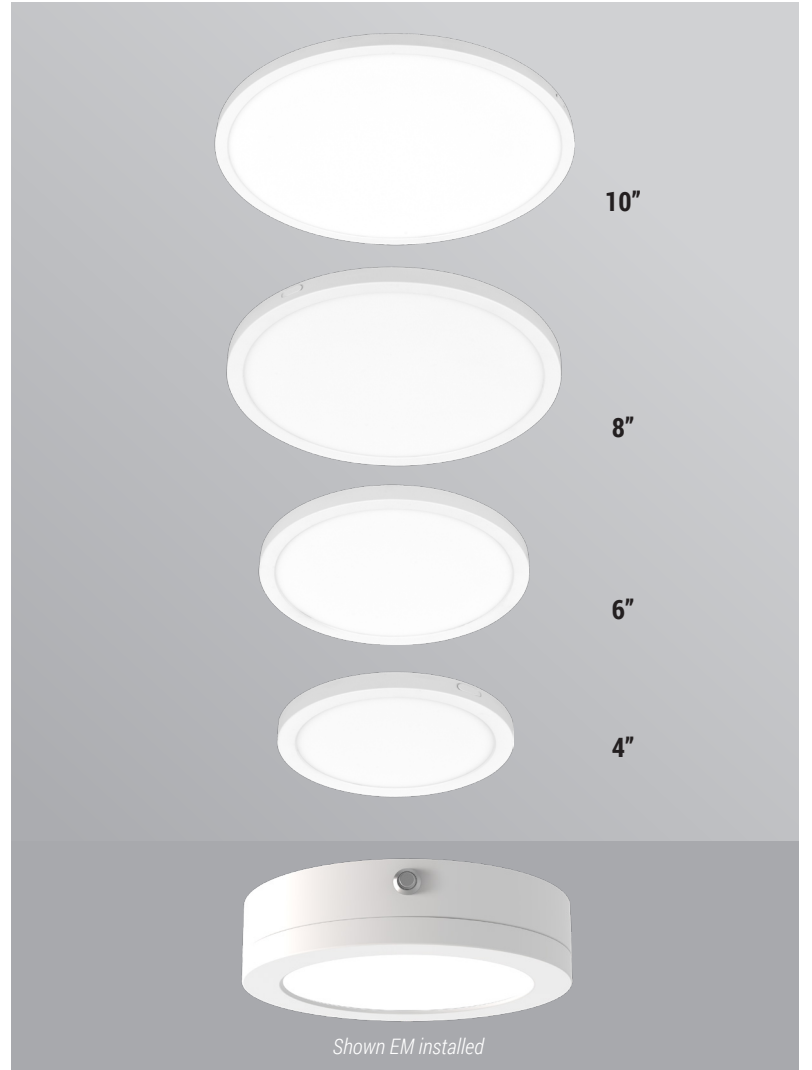
### KEY FEATURES

- Slim profiled minimalistic designed surface mount luminaire
- CCT changeable with unobtrusive edge-lit illumination
- Integral emergency driver option available for 6" and 8"

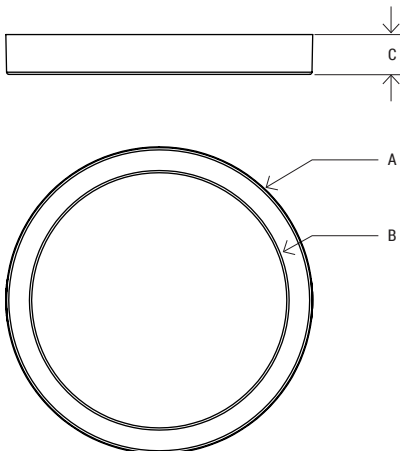
### TECHNICAL SUMMARY

SIZE:	4", 6", 8", 10"
WATTAGE:	11W (4"), 14W (6"), 20W (8"), 25W (10")
LUMEN	650LM, 950LM, 1400LM, 2000LM
EFFICACY	up to 80LM/W
INPUT VOLTAGE	120Vac
AVAILABLE CC	2700K/3000K/3500K/4000K/5000K Color changeable
CRI	80CRI
CONTROL	Phase/Triac dimming
VALIDATIONS	ETL damp location listed, FCC, RoHS compliant
LIFETIME	L70>54,000 hours, 5 year warranty
OPERATION TEMP.	-4°F ~ 104°F / 32°F ~ 104°F
FINISH	White, Black

\*Delivered lumen may vary, refer to photometric for full performance data



### DIMENSIONS



**BLACK FINISH**

Model No.	A	B	C	WEIGHT	w/ EM
ERS-0406L	5.3"	4.4"	.69"	.55 lb	-
ERS-0609L	7"	6.2"	.69"	1 lb	2 lbs
ERS-0814L	8.8"	8"	.69"	1.5 lbs	2.5 lb
ERS-1020L	11.8"	10.7"	.69"	2.5 lbs	-

MODEL NO.	TYPE	PROJECT/DATE
-----------	------	--------------

### ORDERING INFORMATION

\*Additional cost and/or lead time on customized fixtures may apply.

[ ]	-	[ ]	-	[ ]	-	[ ]	-	[ ]
Series	Lumen Package*	Voltage	CCT*	Finish				
ERS	0406L - 650LM (4")	R - (120V)	5CC - 27K/30K/35K/40K/50K color changeable	blank - (White finish) BK - (Black finish)				
	0609L - 950LM (6")							
	0814L - 1400LM (8")							
	1020L - 2000LM (10")							

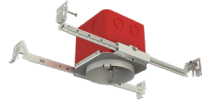
### \*AVAILABLE ACCESSORIES: (SOLD SEPARATELY)



ERS-0609L-R-EM  
ERS-0814L-R-EM  
6"/8" Emergency module

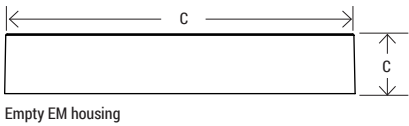
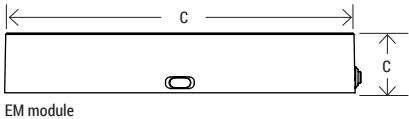


ERS-06R-BX  
ERS-08R-BX  
6"/8" Empty EM housing



MFR4  
4" IC Fire Rated Metallic Electrical J-box housing

*Accessories
ERS-0609L-R-EM - 6" Emergency module
ERS-0814L-R-EM - 8" Emergency module
ERS-06R-BX - 6" Empty EM housing
ERS-08R-BX - 8" Empty EM housing
MFR4 - 4" Fire rated metallic electrical j-box housing



Model No.	A	B	WEIGHT
ERS-0609L-R-EM	7.17"	1.38"	1 lb
ERS-0814L-R-EM	8.85"	1.54"	1 lb
ERS-06R-BX	7.17"	1.38"	.8 lb
ERS-08R-BX	8.85"	1.54"	.8 lb

### SPECIFICATIONS

#### CONSTRUCTION

Non-conductive PC housing, less than 0.8" housing profile, integrated aluminum heat-sink and in white or black finish.

#### FINISH

Polyester coated finish in powder coating after fabrication with embossed facets.

#### OPTICS/DIFFUSER

Frosted PC.

#### ELECTRICAL

Regular 120Vac at 60Hz with standard Triac dimming.

#### MOUNTING

Surface mount (wall or ceiling) directly to an industry standard 4" metal or plastic octagon junction box with 3-1/2" junction box screw-hole spacing. Luminaire provided with leads for direct wire connection in junction box.

#### VALIDATIONS

ETL damp location listed, FCC, RoHS compliant