

FLOW

Architectural Full Illumination Bollard Luminaire

MODEL NO.	TYPE	PROJECT/DATE
-----------	------	--------------

KEY FEATURES

- Flow combines stylistic elegance with rugged protection and vandal resistance
- Bollard mount in round & square shape, full distribution delivering purposeful illumination
- Luminaire is IP65 Ingress Protection rated and IK10 impacted rated
- 3 CCT changeable LED system with 0-10V dimmable, integrated EM driver option available

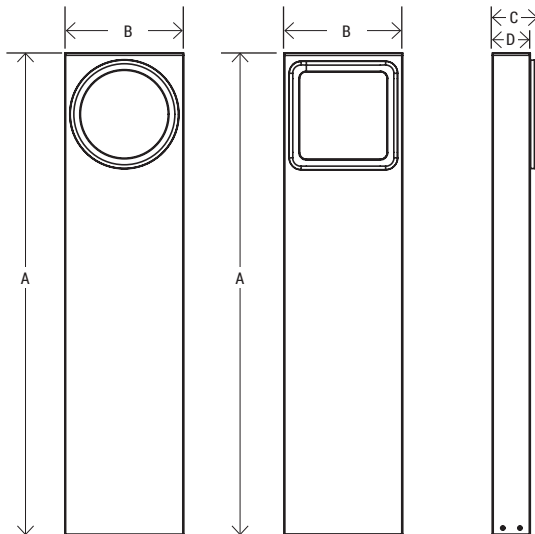
TECHNICAL SUMMARY

SIZE/SHAPE:	Round 9" full distribution in 24" and 40" Overall height / Square 9" full distribution in 24" and 40" Overall height
WATTAGE:	30W/25W/20W
LUMEN/EFFICACY*	2400/2000/1500LM changeable (factory default 2400LM), 80LM/W
INPUT VOLTAGE	120-277Vac
AVAILABLE CCT/CRI	3000K, 3500K, 4000K, 5000K, Custom / 80 CRI standard
CONTROL	On/off with 0-10V dimming driver, on/off button photocell optional
VALIDATIONS	ETL & cETL wet location listed, IP65 and IK10 rated, FCC & RoHS compliant
LIFETIME	L70>100,000 hours, 5 year warranty
OPERATION TEMP.	-40°F ~ 122°F / 32°F ~ 122°F (with EM)
FINISH	Dark Bronze, Matte Black, Matte White, Silver Gray

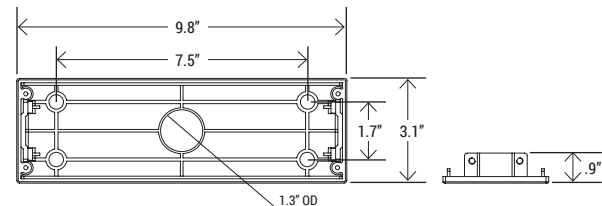
*Delivered lumen may vary, refer to photometric for full performance data



DIMENSIONS



Model No.	A	B	C	D	WEIGHT
BOLLARD FULL ROUND (BFR)	24"	9.8"	3.7"	3.1"	6.6 lbs
	40"				9.1 lbs
BOLLARD FULL SQUARE (BFS)	24"	9.8"	3.7"	3.1"	7.1 lbs
	40"				9.6 lbs



FLOW

Architectural Full Illumination Bollard Luminaire

MODEL NO.	TYPE	PROJECT/DATE
-----------	------	--------------

ORDERING INFORMATION

*Additional cost and/or lead time on customized fixtures may apply.

<input type="text"/>	-	<input type="text"/>	-	<input type="text"/>	-	<input type="text"/>	-	<input type="text"/>	-	<input type="text"/>	-	<input type="text"/>
Series	Style	Size	Lumen Package	Voltage	CCT	Control	Finish	EM Option				
FLOW (Bollard)	BFR - (Bollard full illuminate round) BFS - (Bollard full illuminate square)	24 - (24" height) 40 - (40" height) Custom* - (12" min)	24LC - (2400/2000/1500LM) Custom*	U - (120-277V)	CC - (30K/35K/40K/CCT Changeable) 50K - (5000K)* Custom*	C1 - (ON & Off 0-10V dimmable driver) C2 - (ON & Off button integrated photocell)*	BK - (Matte Black) DB - (Dark Bronze) SG - (Silver Gray) WH - (Matte White) Custom RAL*	EM - (4W factory installed EM)*				
			<i>*made to order</i>									

*AVAILABLE ACCESSORIES:

*Available accessories sold separately



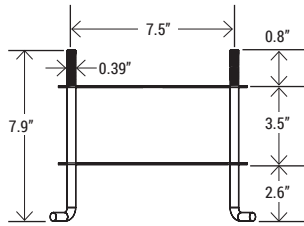
FLOW-SFR-CBC



FLOW-SFS-CBC



FLOW-B-ANC



*Accessories

FLOW-BFR-CBC-BL/DB/SG/WH - Decorative cross blades cover for flow BFR (Round full illuminate)

FLOW-BFS-CBC-BL/DB/SG/WH - Decorative cross blades cover for flow BFS (Square full illuminate)

FLOW-B-ANC - Stainless-steel 4 anchors set for Flow Bollard (**Required for installation, pre-ship available**)

FINISH REFERENCE



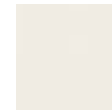
Dark Bronze
(RAL 8019)



Matte Black
(RAL 9011)



Silver Gray
(RAL 9006)



Matte White
(RAL 9010)

SPECIFICATIONS

CONSTRUCTION

Die-cast aluminum housing with a impact resistant prismatic PC Lens is fully gasketed with tubular silicone gasket in 6061 extruded aluminum bollard body.

FINISH

Exterior parts are protected by a rust and corrosion proof zinc-infused polyester powder coating applied through a 5-stage preparation process.

OPTICS/DIFFUSER

Impact resistant prismatic diffused PC Lens provides uniformed illumination and vandal protection.

ELECTRICAL

Long life 3-CCT changeable LED system with outdoor rated driver, 0-10V dimmable, with 120-277Vac multi-volt compatibility, factory installed button photocell option available.

MOUNTING

Anchor based bollard mount.

VALIDATIONS

ETL & cETL wet location listed,, IP65 and IK10 rated, FCC, RoHS compliant